

New features in ResInsight

Opm Meeting 24.01.2019

Magne Sjaastad  
Ceetron Solutions AS

## Presentation

- Main developers of ResInsight



Gaute Lindkvist

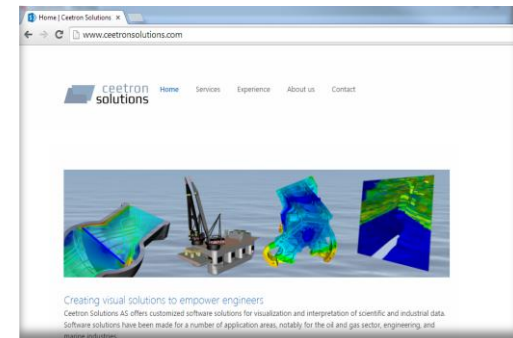


Jacob Støren



Magne Sjaastad

- Ceetron Solutions AS
  - Founded in 2013
  - Spin-off from Ceetron AS
  - Scientific visualization

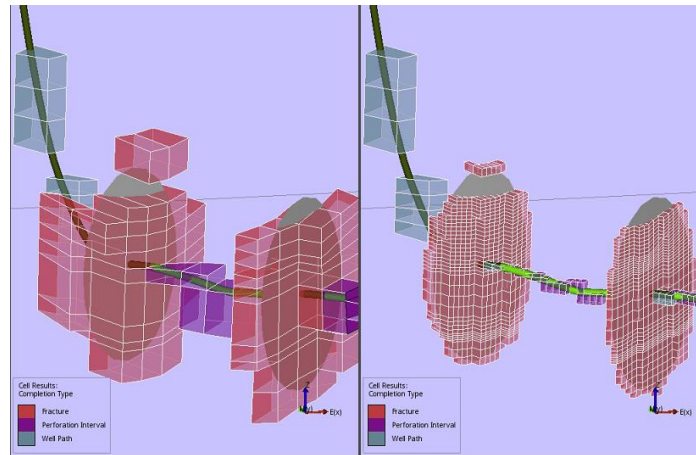
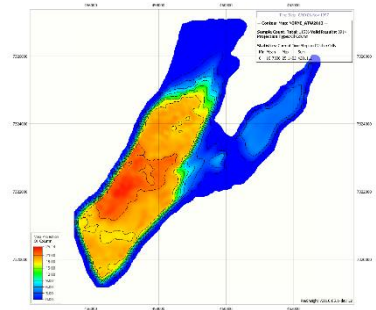


[www.ceetronsolutions.com](http://www.ceetronsolutions.com)

*Creating visual solutions to empower engineers*

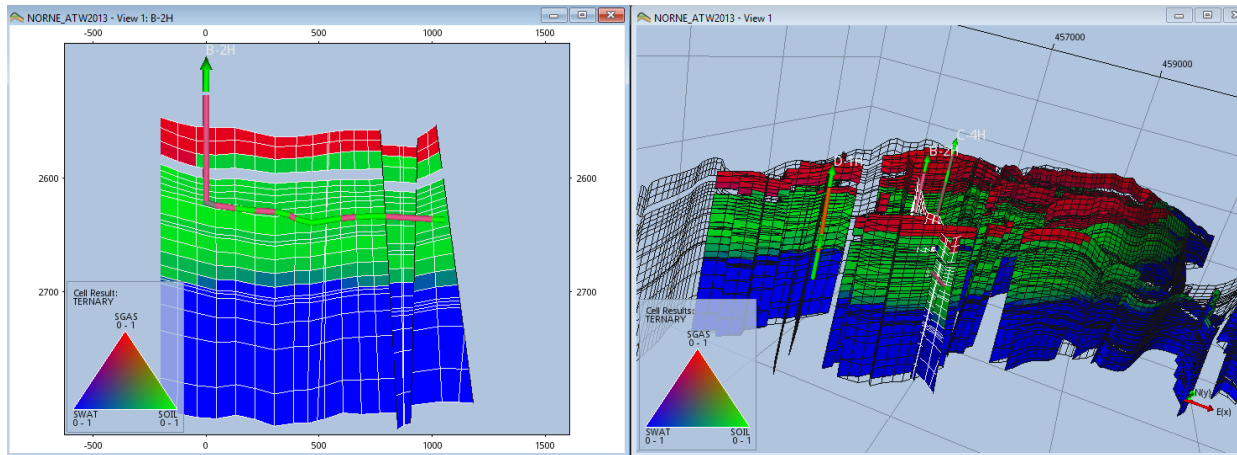
## Agenda

- New Features in ResInsight
- Live demonstration of selected features
- Current projects and plans



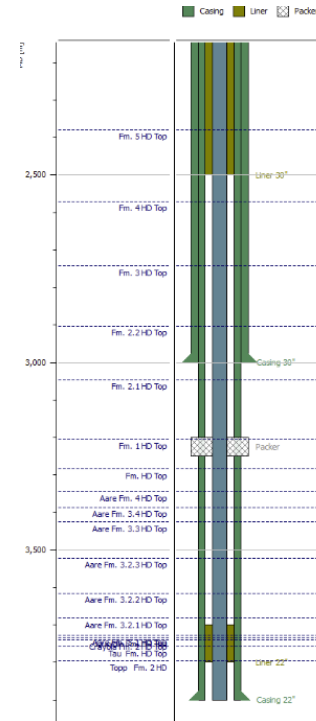
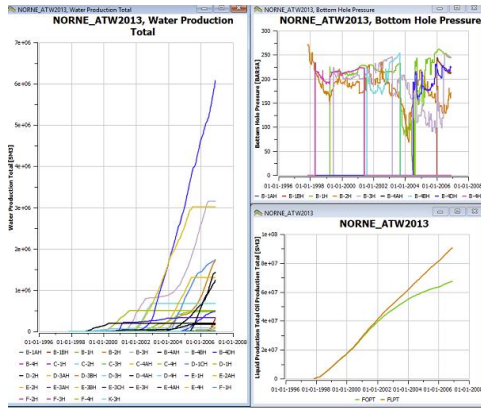
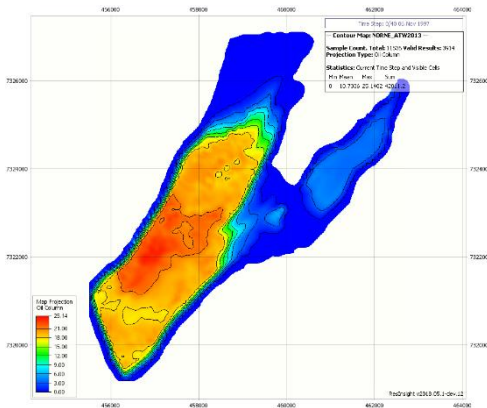
## Visualization

- Main grid with subgrids (LGRs)
- Simulation wells, Faults, Well paths
- Non-neighbor connections (NNCs) with data
- Geomechanical models (ABAQUS)
- Flow-Diagnostics module (library implemented by SINTEF)



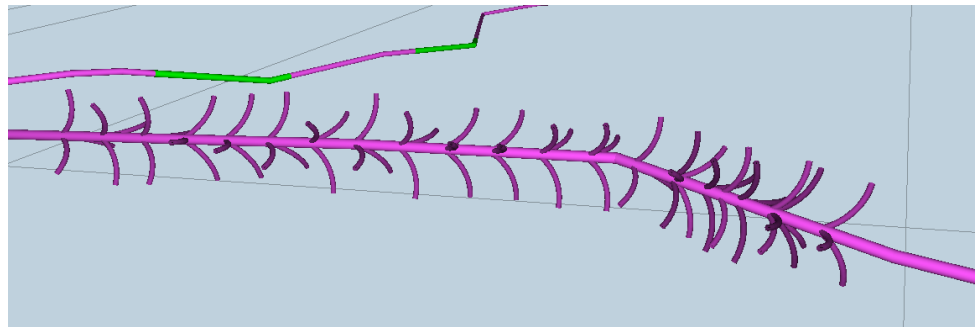
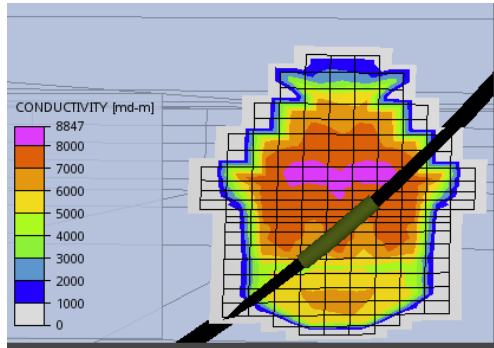
# Plotting

- Summary plots
- Ensemble plots
- Well log curves
  - Plot data imported from file
  - Plot data for curves extracted along well path
- RFT/PLT data
- Casing Design with Completions
- Contour plots



## Computations and preprocessing

- Interface to octave
- Modelling and preprocessing of hydraulic fractures and fishbones
- Completion transmissibility data
  - Compute transmissibility factors for grid cells
  - Export to text file (COMPDAT)
- Workflow for creation of new well paths



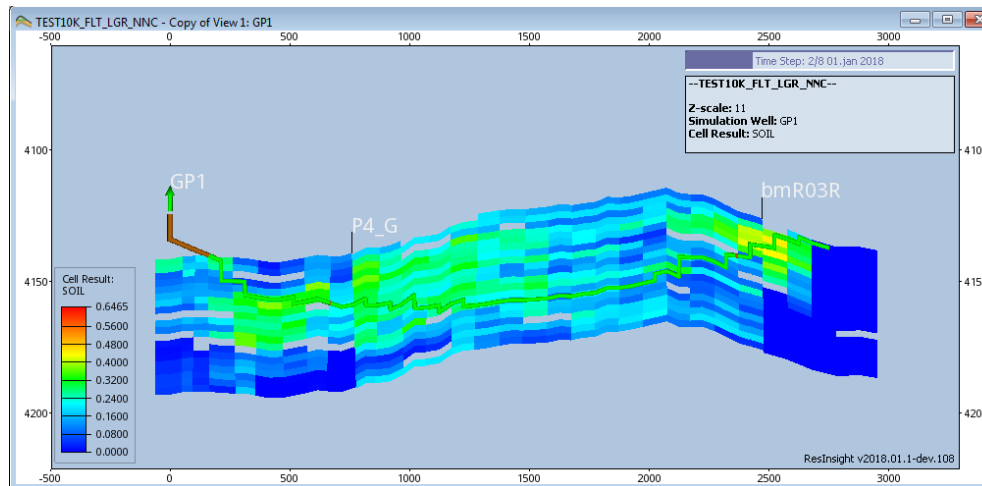
# LIVE DEMO

# NEW FEATURES 2018



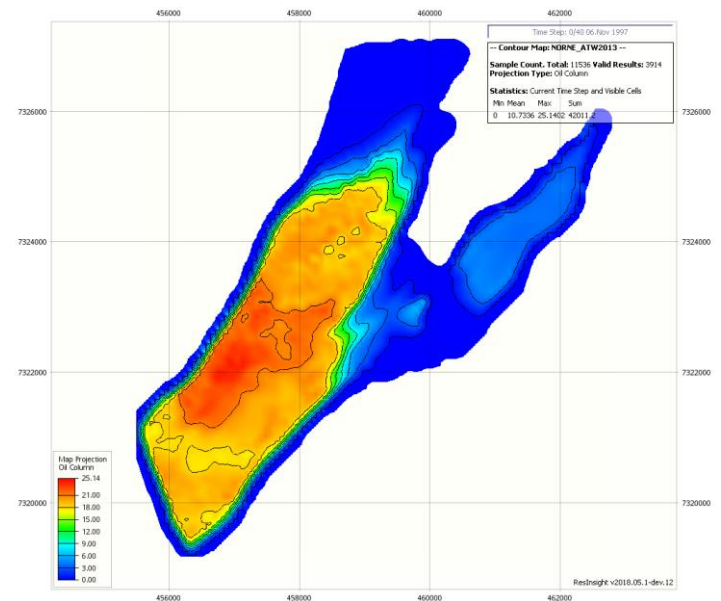
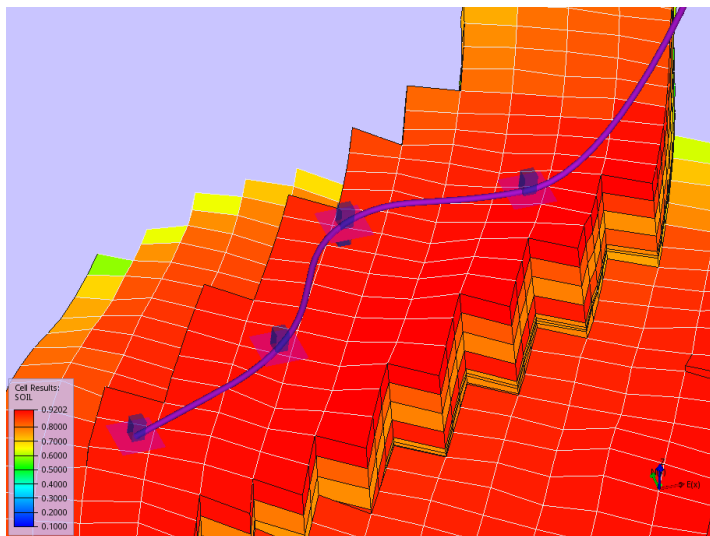
## New Features 2018.05

- 2D intersection view
- 3D Well Log Curves
- Support origin restart file
- Ensemble management and plotting
- Visualization of well connection factors



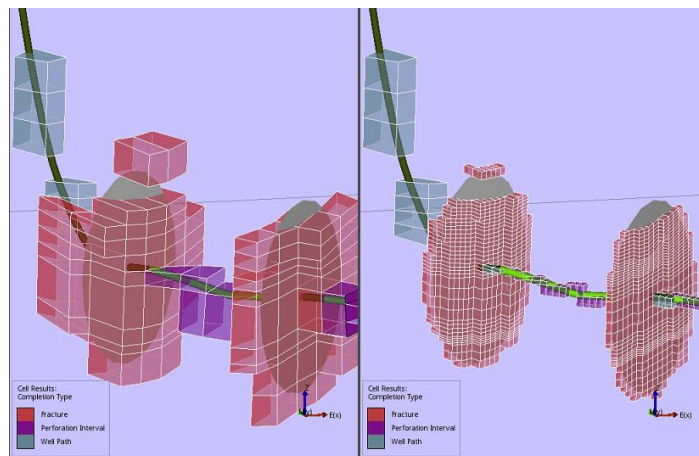
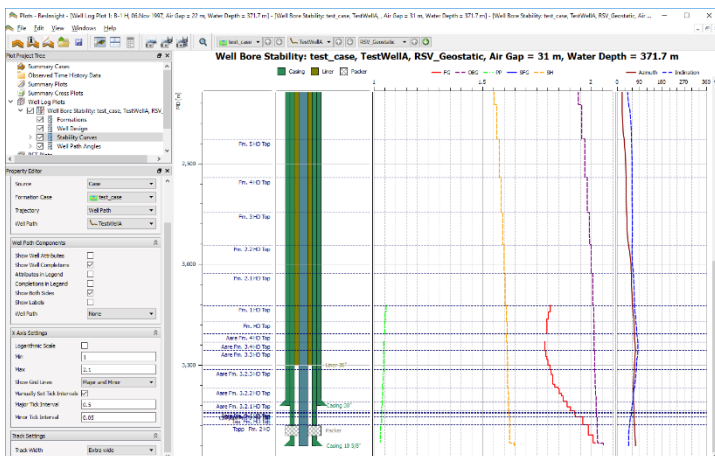
## New Features 2018.11

- Well path creation
- 2D contour maps
  - Computation and display of oil/gas column
  - Aggregations based on length or volume
  - Aggregation based on user-defined weighting property



## New Features 2018.11

- Completions
  - Easily create multiple fractures along well paths
  - Support export of completions based on perforation intervals
- Creation of new local grid refinement(LGR)
  - Create new LGRs based on main grid cells intersected by completions
  - Export of CARFIN for generated LGRs
  - Export of COMPDATL for generated LGRs
- Well Bore Stability Plots and Casing Design



# CURRENT PROJECTS AND PLANS

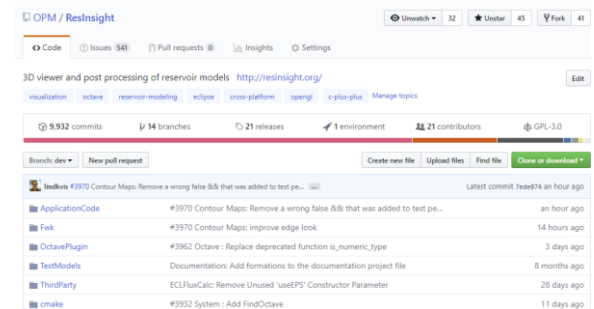
## Current Projects

- Maintenance Agreement
  - System related issues
  - General bugfix and improvements
- Development project for new features
  - Migration to Qt5
  - Python scripting

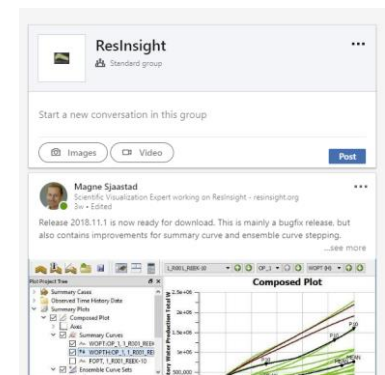


## Feedback and opportunities

- Project financed by Equinor
- Feedback and suggestions for changes are welcome
- Report bugs and issues at GitHub



- Join ResInsight on Linked in to get updates



## References

GitHub <https://github.com/OPM/ResInsight/issues>  
LinkedIn <https://www.linkedin.com/groups/12167660/>  
Documentation <https://resinsight.org/>